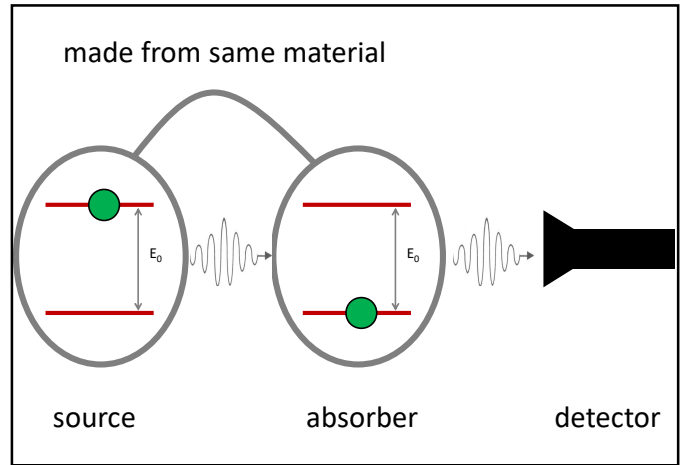


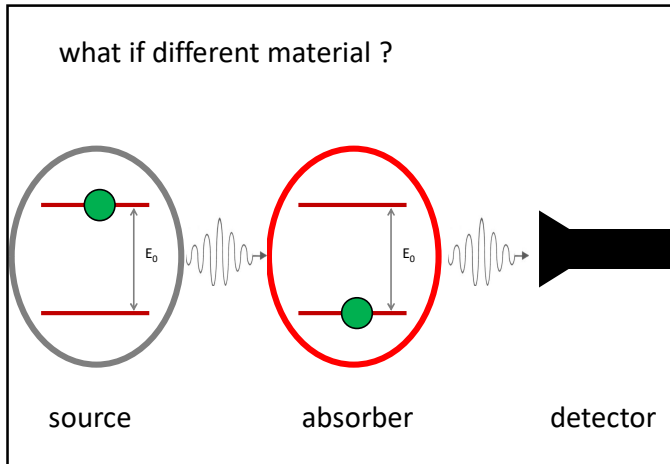
# Mössbauer spectroscopy

www.hyperfinecourse.org

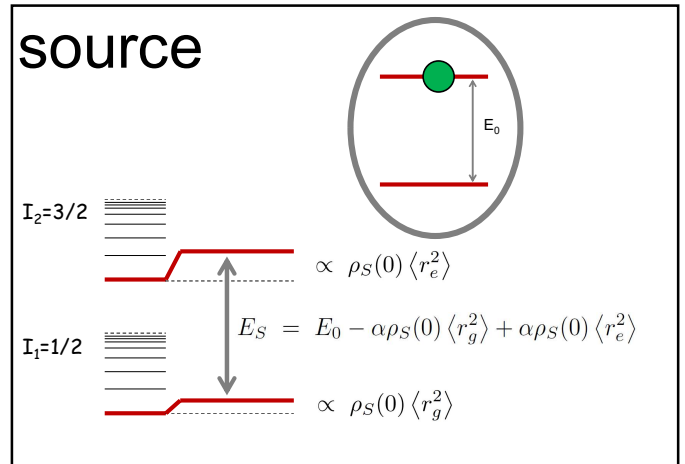
1



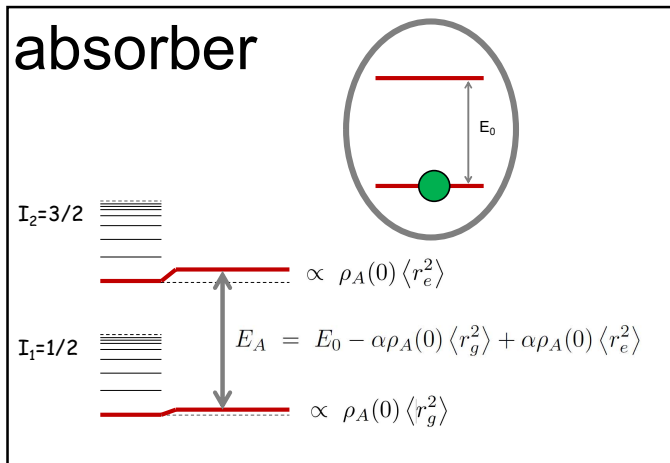
2



3



4



5

$$E_S \neq E_A$$

$$E_S - E_A \propto (\rho_S(0) - \rho_A(0)) (\langle r_g^2 \rangle - \langle r_e^2 \rangle)$$

**$\mu\text{eV}$**

6

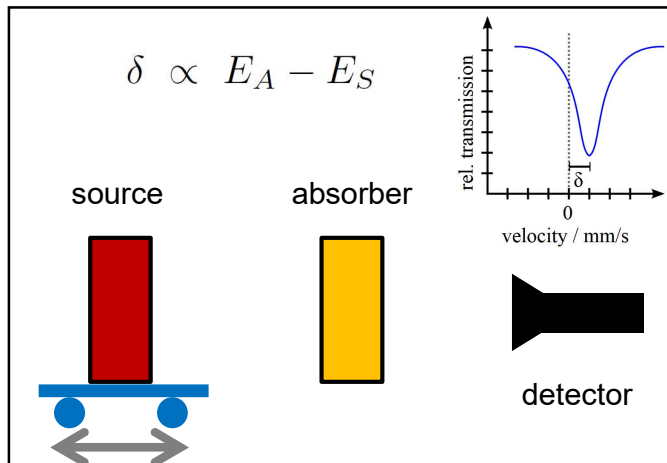
$$\nu_{obs} = \nu_{rest} \left( 1 + \frac{v}{c} \right)$$

$$\Delta\nu = \nu_{rest} \frac{v}{c}$$

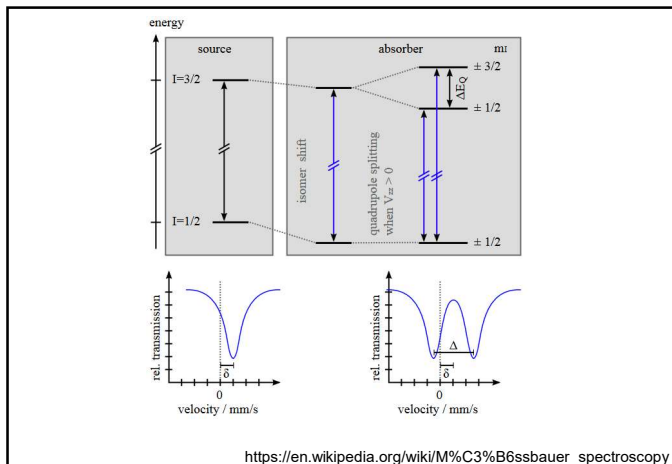
$$\underbrace{\Delta E}_{1 \mu eV} = \underbrace{E_0}_{100 keV} \frac{v}{c}$$

$$v = 3 \text{ mm/s}$$

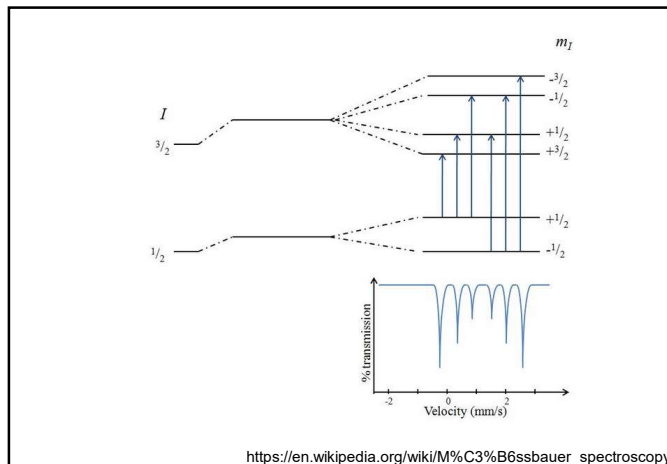
7



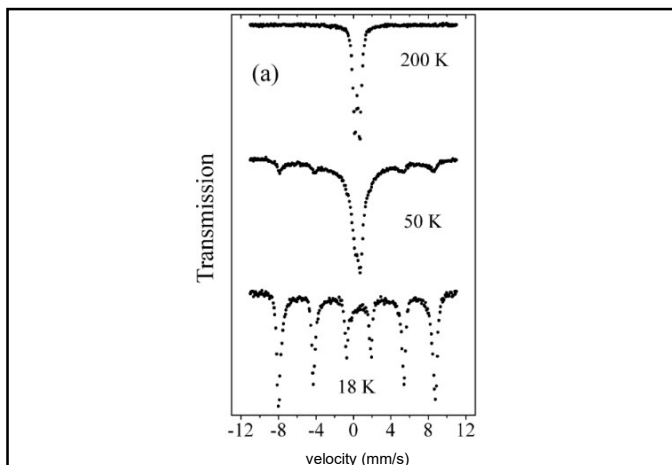
8



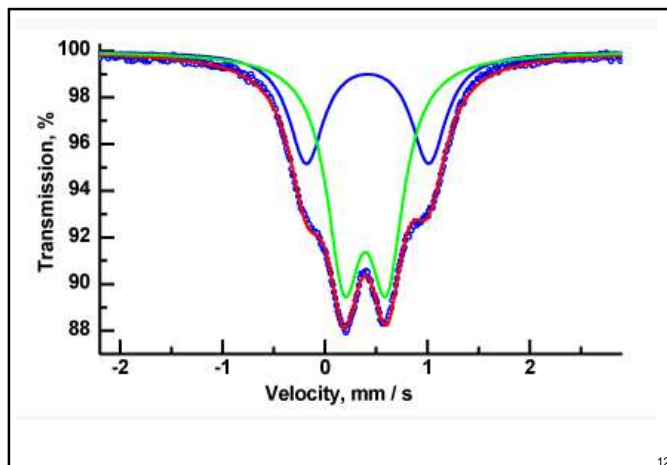
9



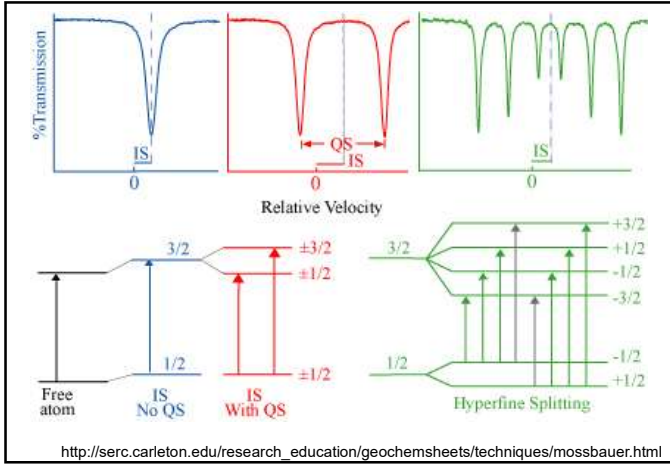
10



11



12



13